

## TINA-TAPE lenses for CREE XP-G LEDs (UPDATED 20101028)



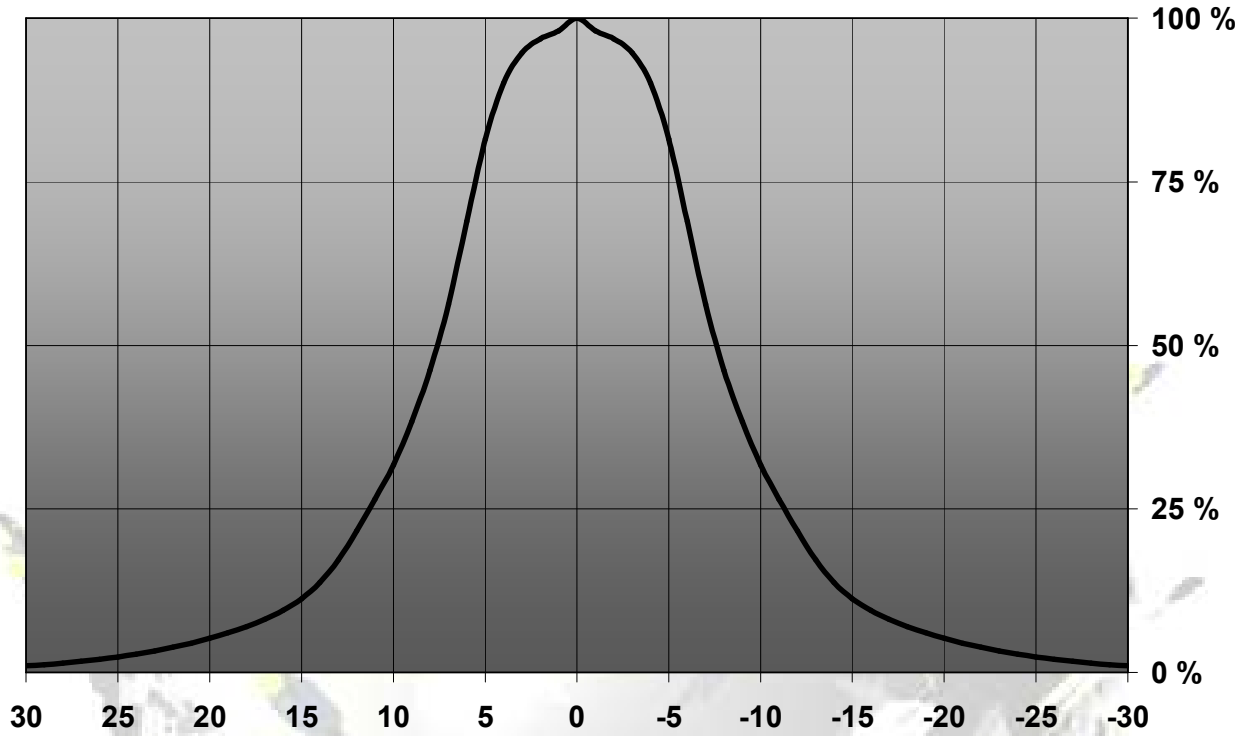
- Designed & optimized for Cree's XP-G series of LEDs
- Lens material optical grade PMMA with high UV and temperature resistance (105°C/220°F). Allows use of high current and temperature conditions.
- Best available optical efficiency, over 90%, with an extremely good cutoff of light
- Fastening to heat sink with a PU foam adhesive tape of automotive grade (included)
- We advise customer to ensure the suitability and sufficiency of the bond in the end product. For example, mechanical stress, vibration and holes on the surface of the circuit board weaken the strength of the tape.
- Please check fastening details from this link:  
([http://www.ledil.com/datasheets/DataSheet\\_TAPE.pdf](http://www.ledil.com/datasheets/DataSheet_TAPE.pdf))
- Compact dimensions 16.1 x 10.1 mm.

## LENS TYPES

NAME	ORDERING CODE	FWHM Angle
TINA-XP-G Real Spot	FA10887_Tina-XP-G-RS	±7°
TINA-XP-G Diffuser	FA10644_Tina-XP-G-D	±9°
TINA-XP-G Medium	FA10645_Tina-XP-G-M	±15.5°
TINA-XP-G Wide	FA10838_Tina-XP-G-W	±25°
TINA-XP-G WW	FA11019_Tina-XP-G-WW	Coming soon
TINA-XP-G Oval	FA11200_Tina-XP-G-O	±20°x±9°

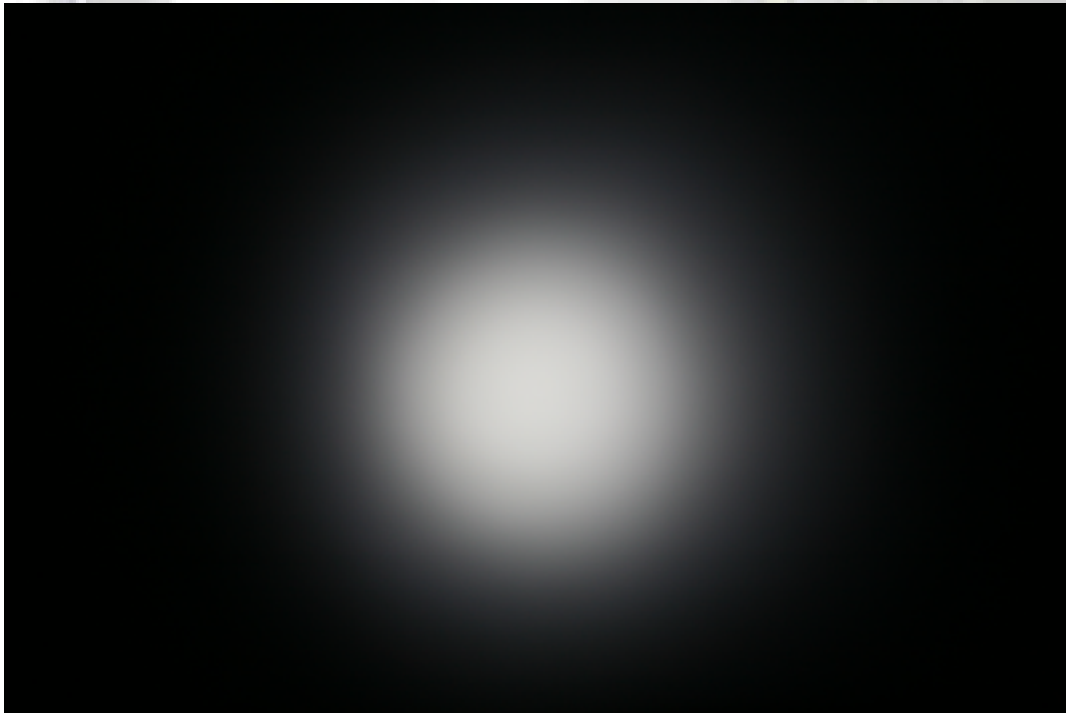
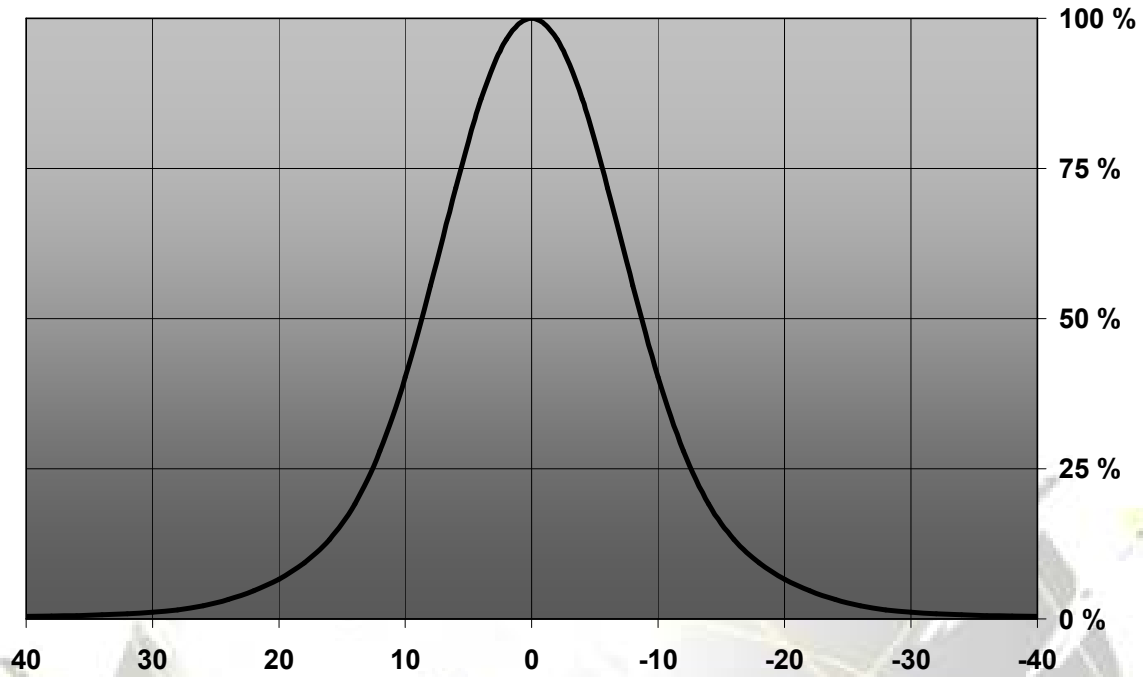
## MEASUREMENTS

Relative Intensity of FA10887\_Tina-XP-G-RS

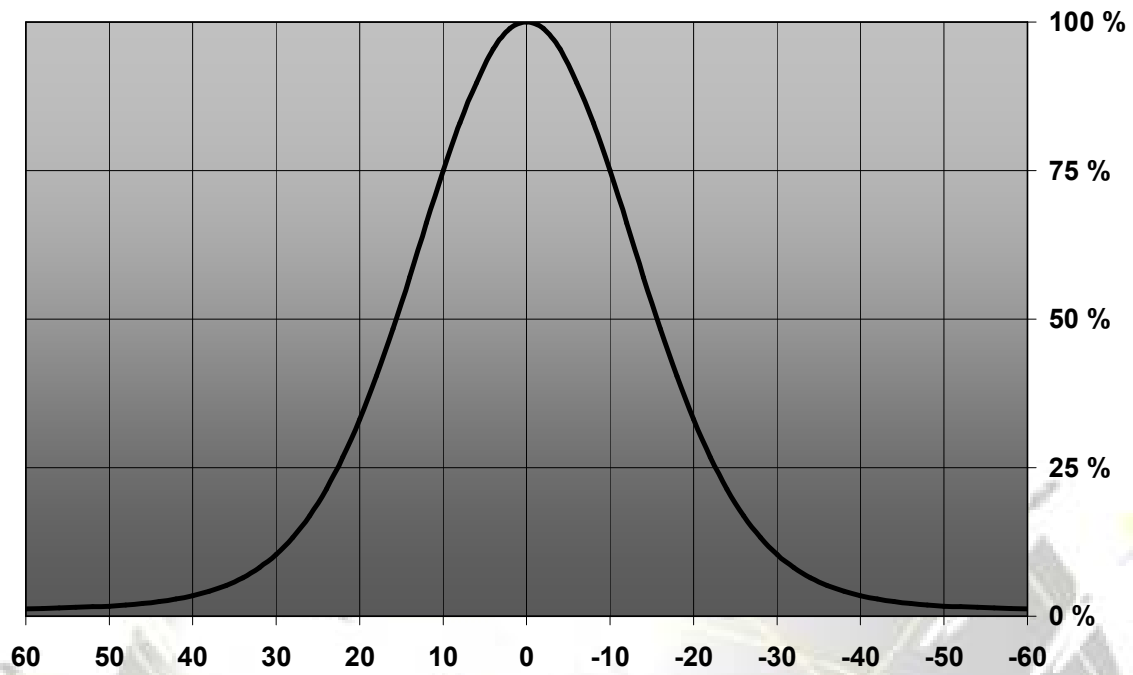


© Ledil Oy – PRELIMINARY - Subject to change without prior notice

Relative Intensity of FA10644\_Tina-XP-D

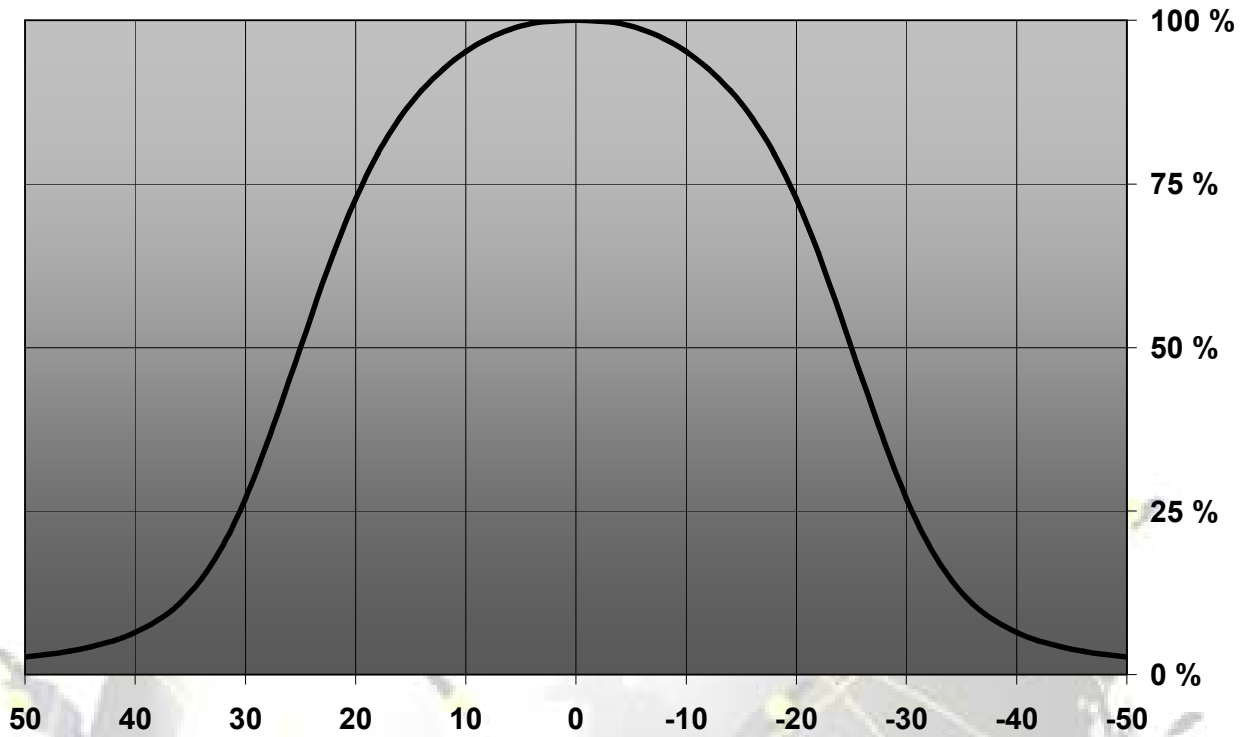


Relative Intensity of FA10645\_Tina-XP-M



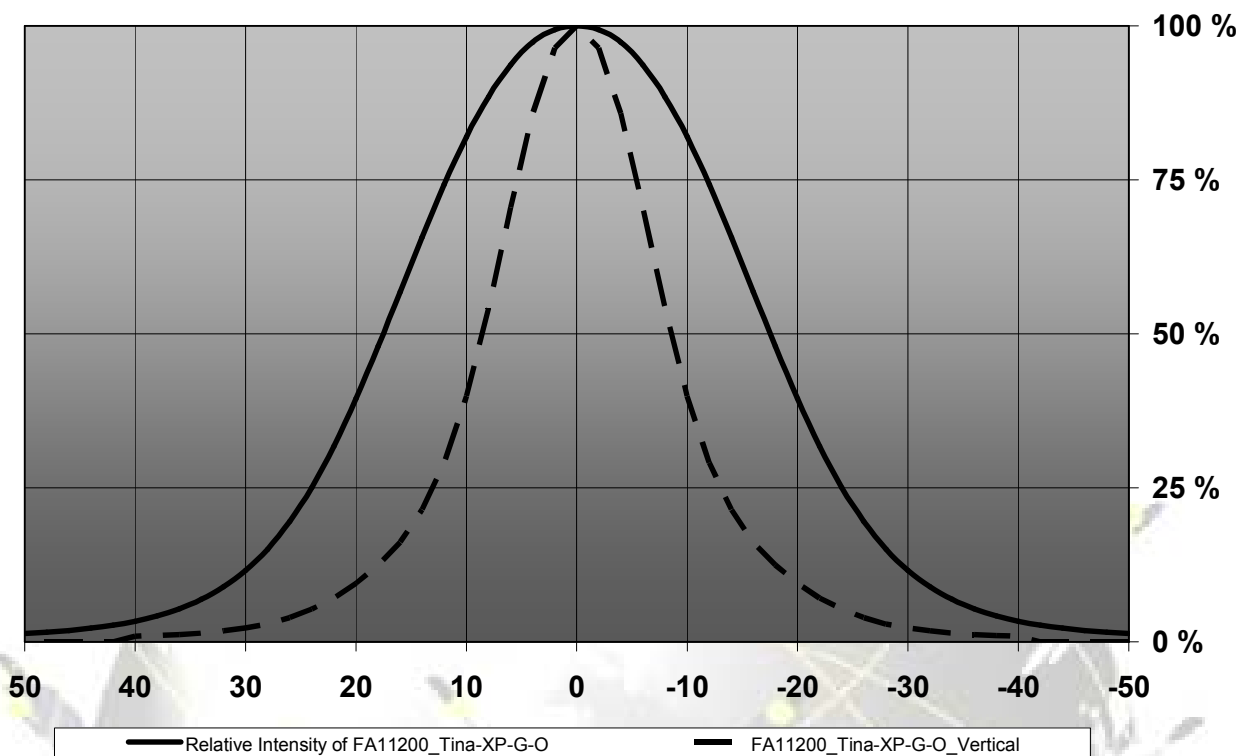
© Ledil Oy – PRELIMINARY - Subject to change without prior notice

Relative Intensity of FA10838\_Tina-XP-G-W

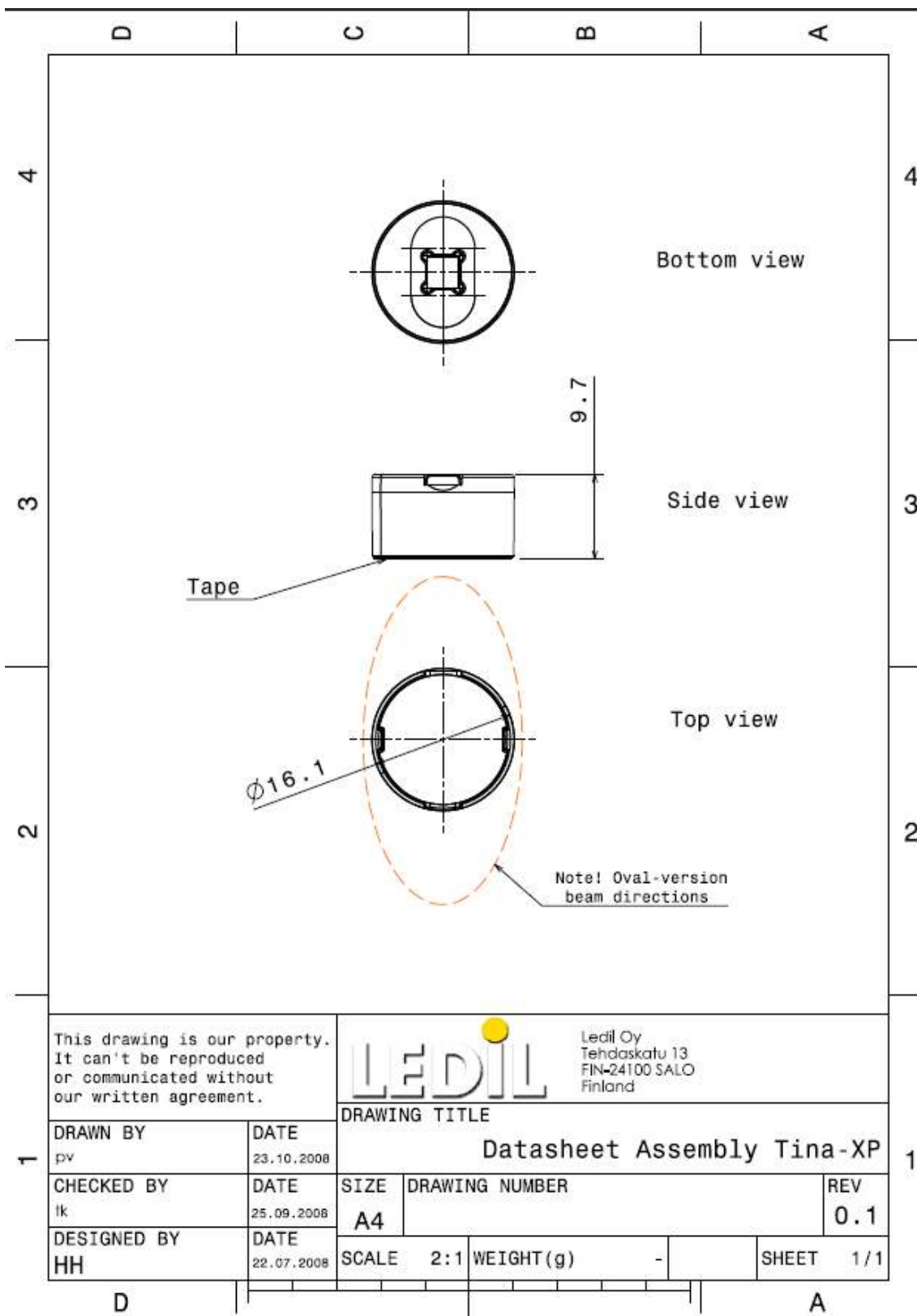


© Ledil Oy – PRELIMINARY - Subject to change without prior notice

## Relative Intensity of FA11200\_Tina-XP-G-O



## DRAWINGS



© Ledil Oy - PRELIMINARY - Subject to change without prior notice