

## LXP-G LENSES FOR CREE XP-G LEDs



- Specially designed for Cree XLAMP XP-G series of LEDs.
- Special care taken to make a uniform white or warm white illumination. Lenses work well with other colors, too.
- Lens material optical grade PMMA. Allows use of high current and temperature conditions
- Best available optical efficiency, more than 90%, with an extremely good cutoff of light
- Fastening to heat sink with a PU foam **adhesive tape** of automotive grade

### LENS TYPES

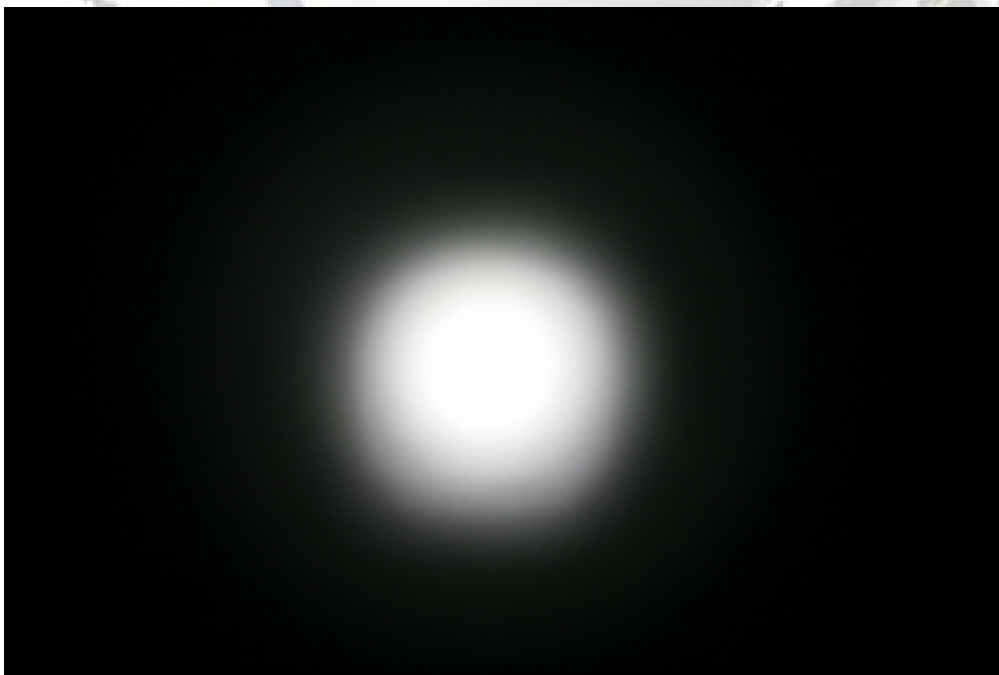
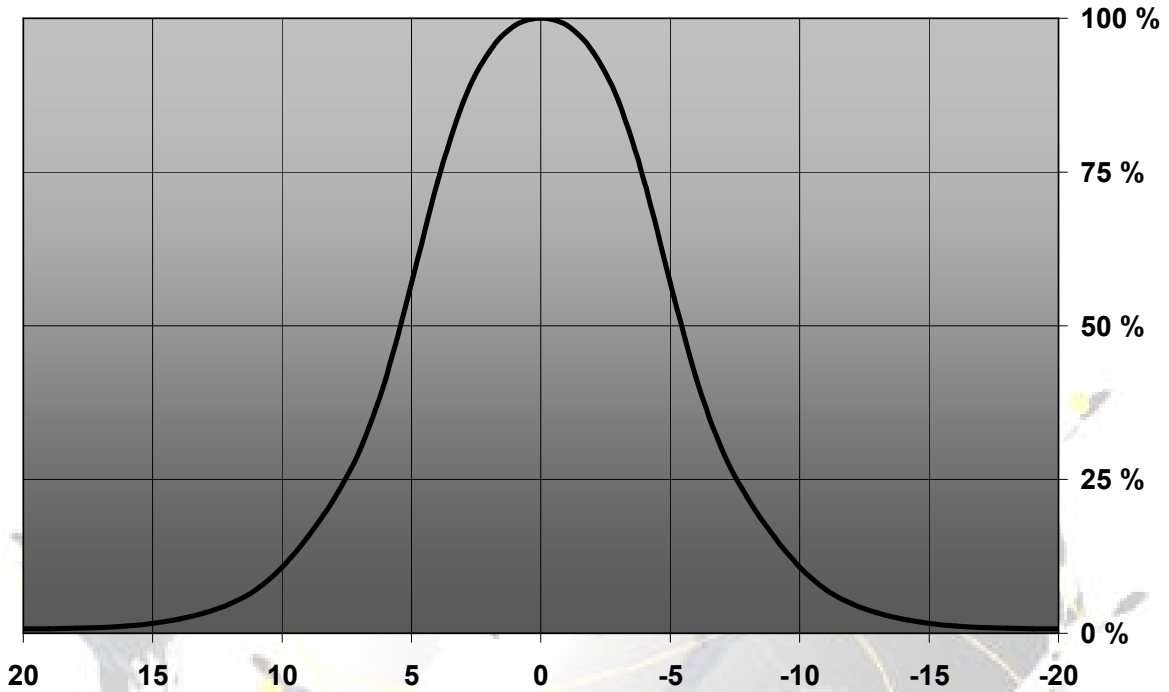
NAME	ORDERING CODE	FWHM Angle
LXP-G REAL SPOT	FA10661 LXP-G-RS	±5.5°
LXP-G DIFFUSER	FA10663 LXP-G-D	±7.5°
LXP-G MEDIUM	FA10660 LXP-G-M	±13°
LXP-G OVAL	FA11116 LXP-G-O-90	±19° X ±10.5°
LXP-G RECTANGULAR	FA10662 LXP-G-REC	±19° x ±11.5°
LXP-G WIDE	FA10832 LXP-G-W	±23°

EULUMDAT & IES FILES AVAILABLE BY REQUEST

© Ledil Oy – PRELIMINARY - Subject to change without prior notice

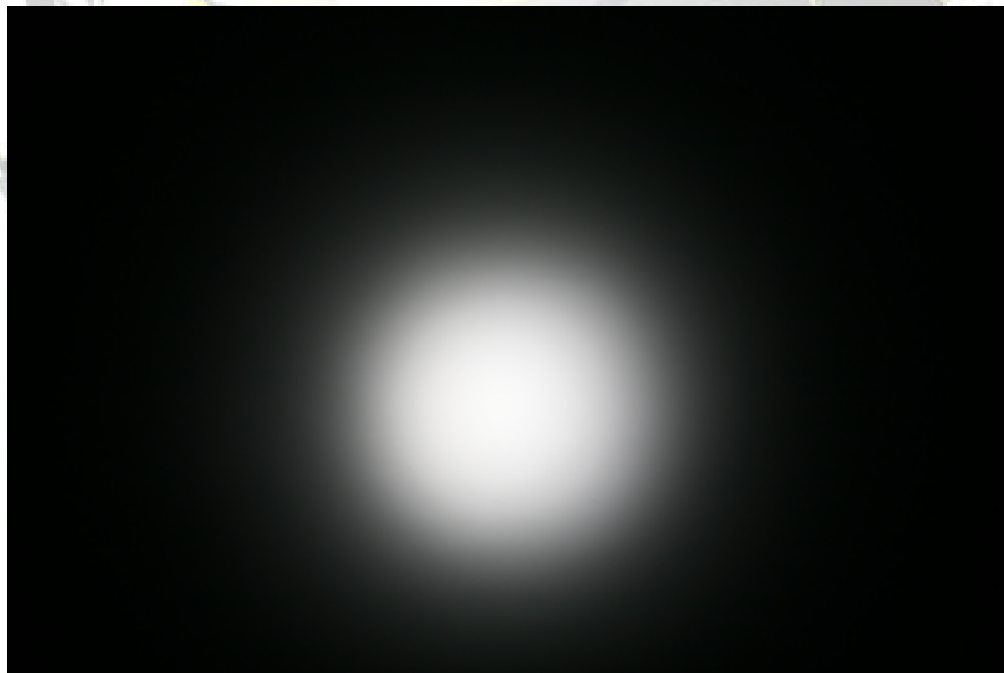
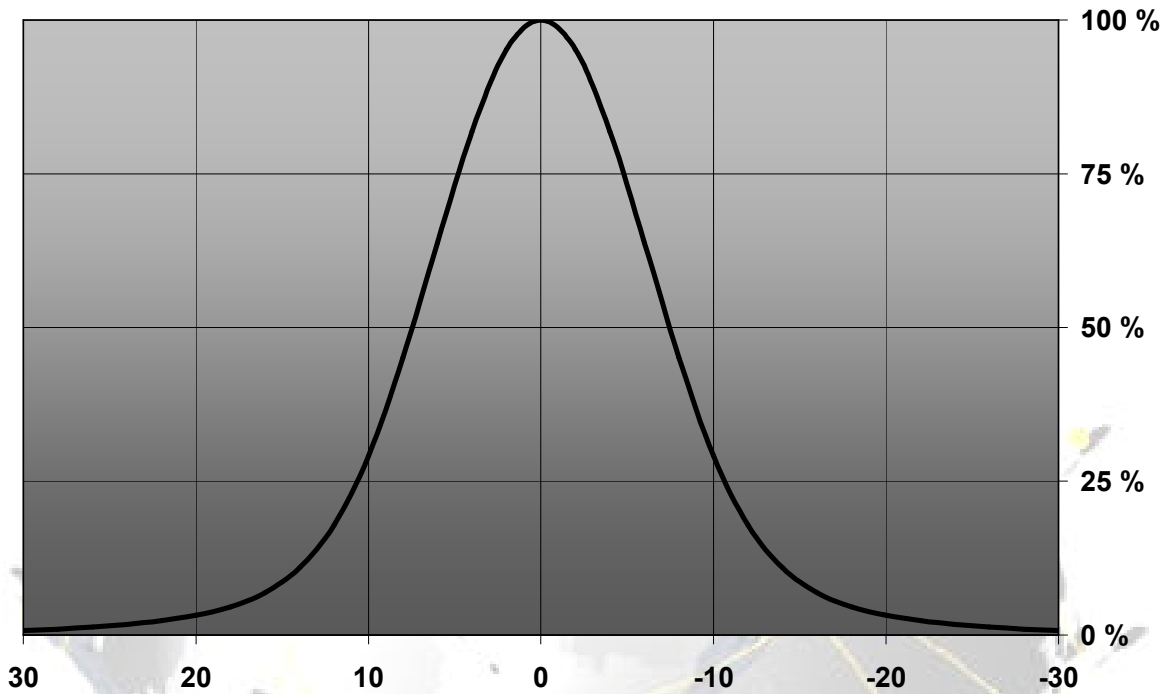
MEASUREMENT DATA

Relative Intensity of FA10661\_LXP-RS



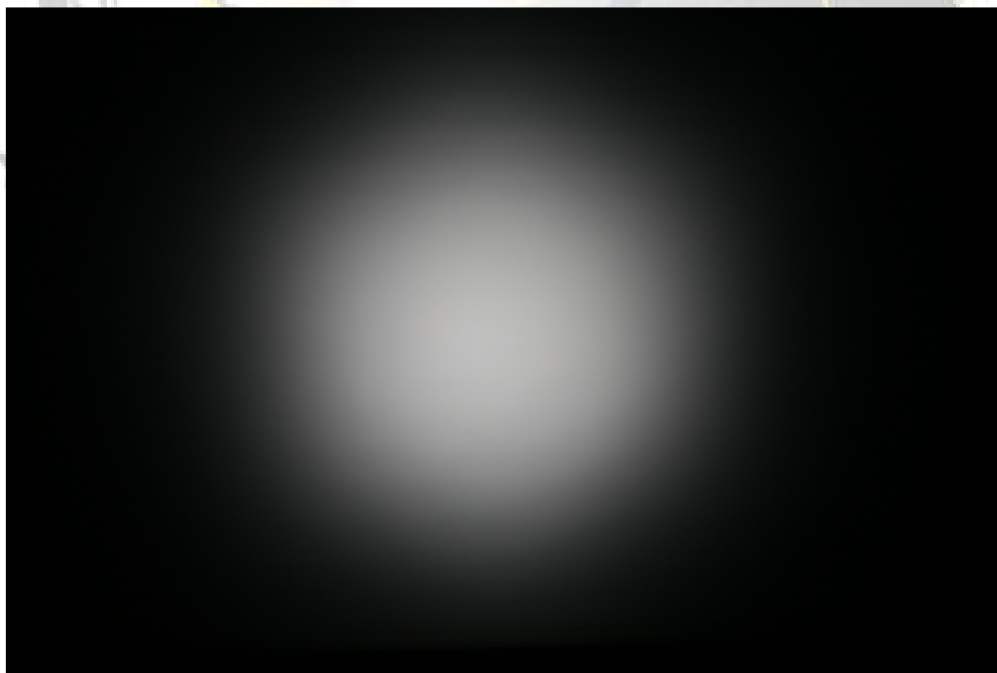
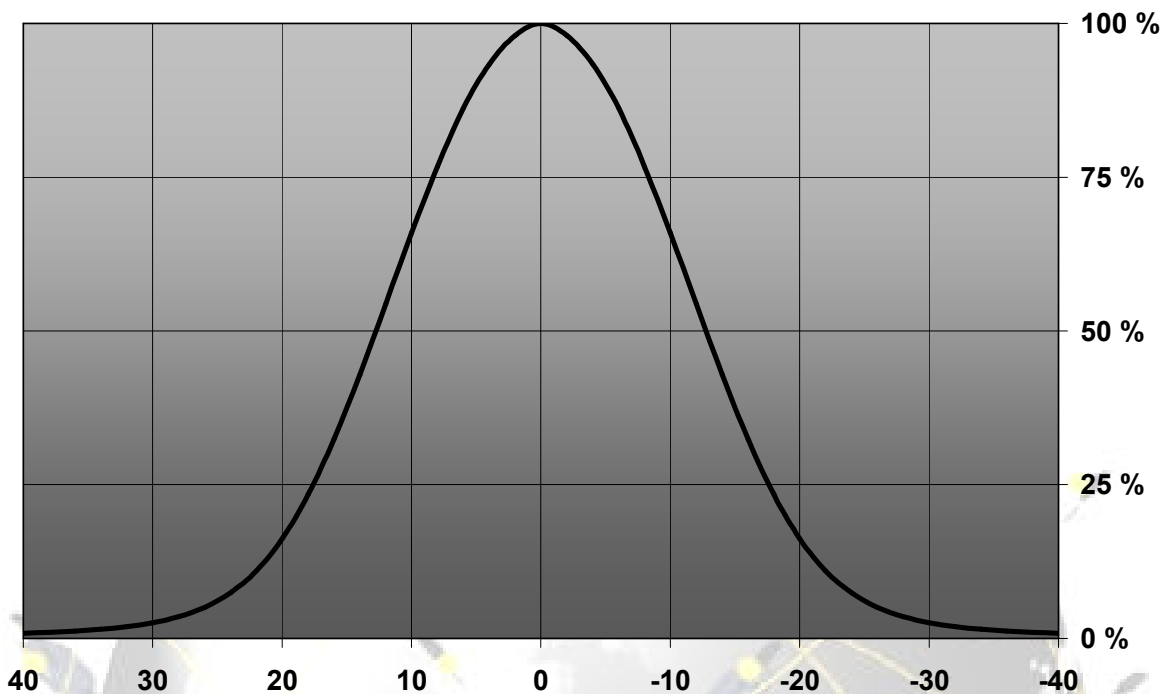
© Ledil Oy – PRELIMINARY - Subject to change without prior notice

Relative Intensity of FA10663\_LXP-D



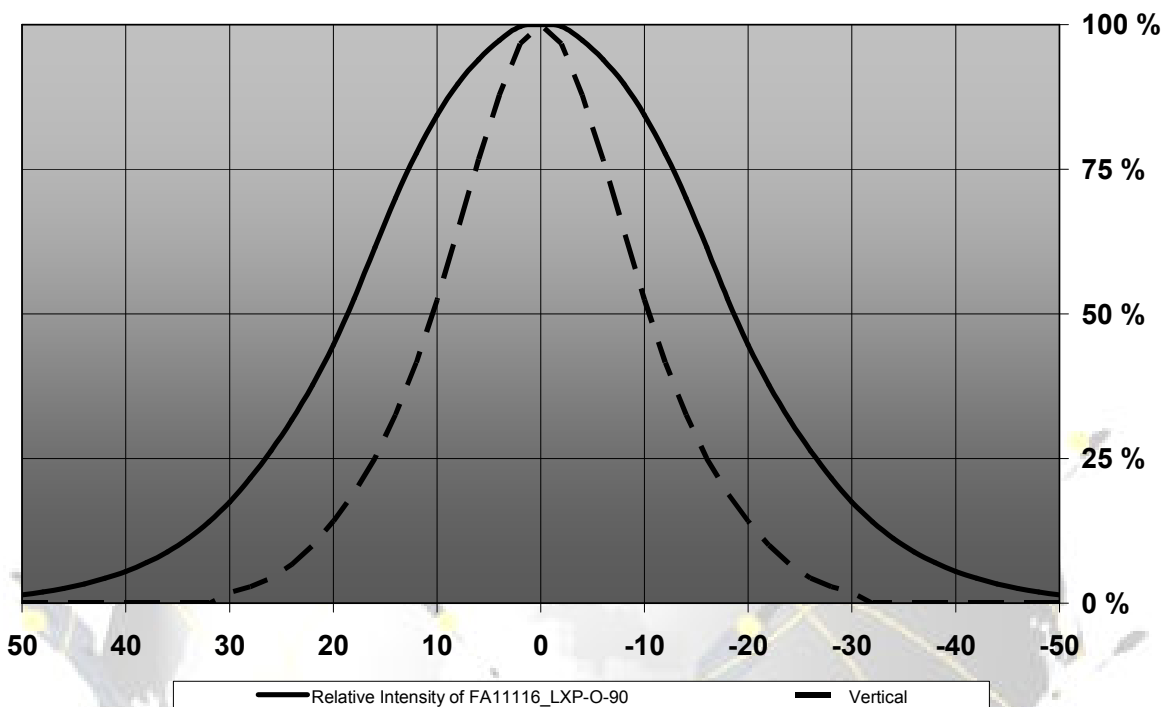
© Ledil Oy – PRELIMINARY - Subject to change without prior notice

Relative Intensity of FA10660\_LXP-M



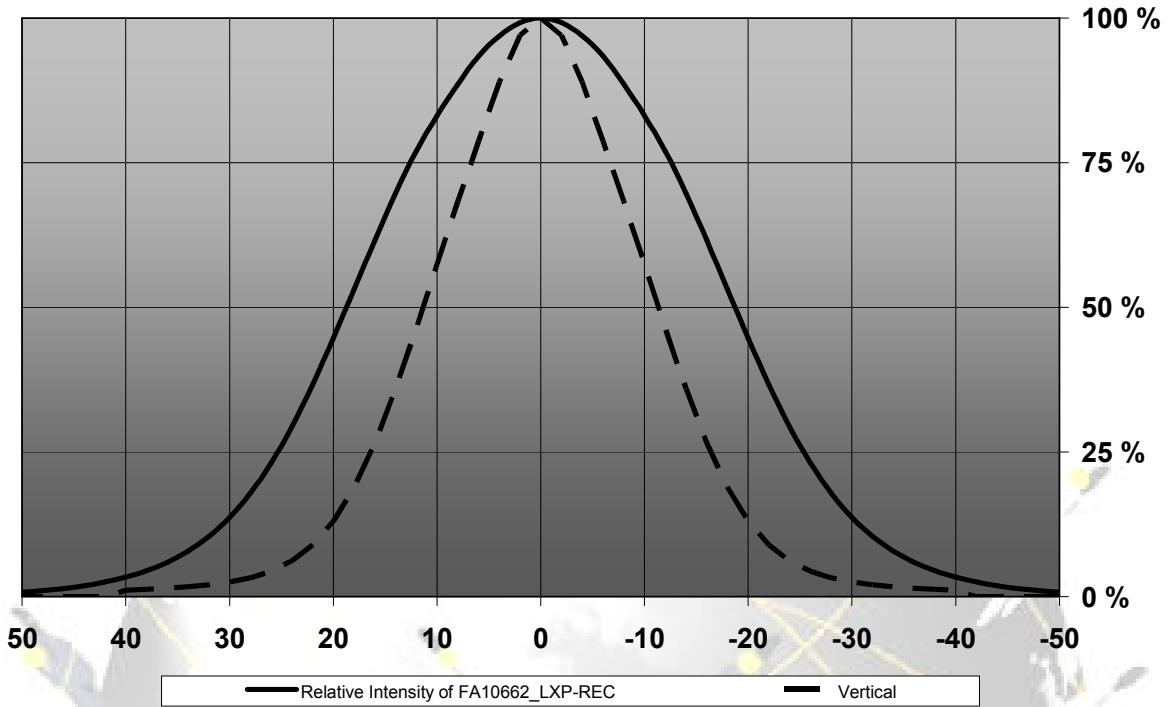
© Ledil Oy – PRELIMINARY - Subject to change without prior notice

Relative Intensity of FA11116\_LXP-O-90

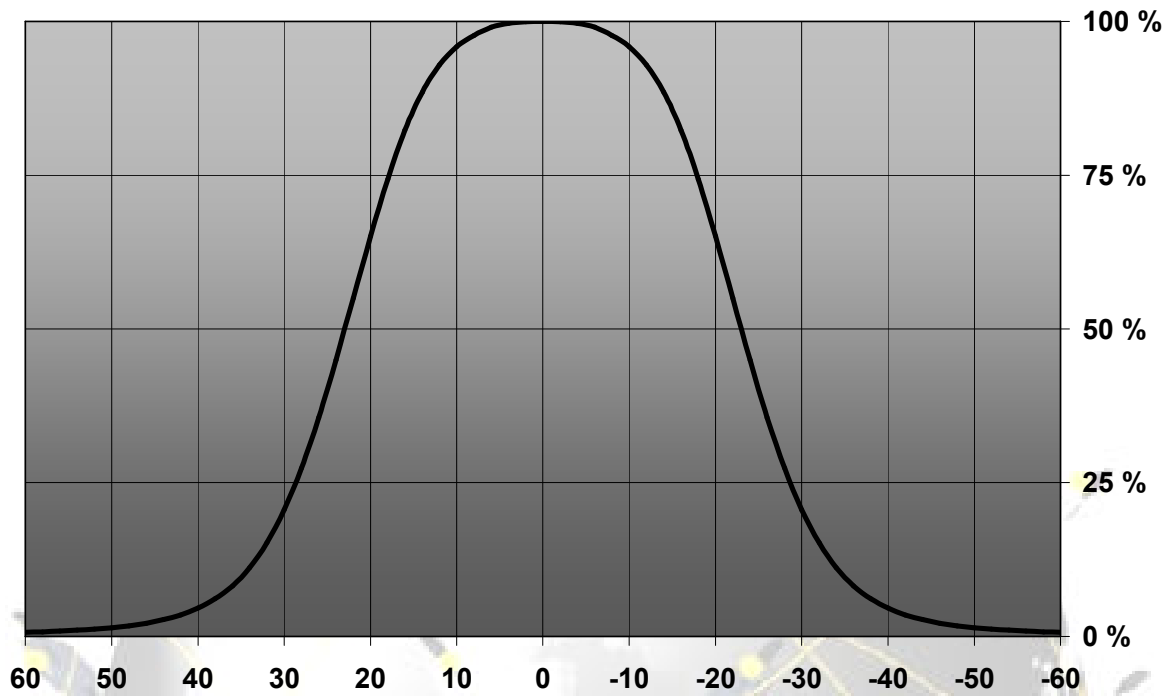


© Ledil Oy – PRELIMINARY - Subject to change without prior notice

Relative Intensity of FA10662\_LXP-REC



© Ledil Oy – PRELIMINARY - Subject to change without prior notice

**Relative Intensity of FA10832\_LXP-W**

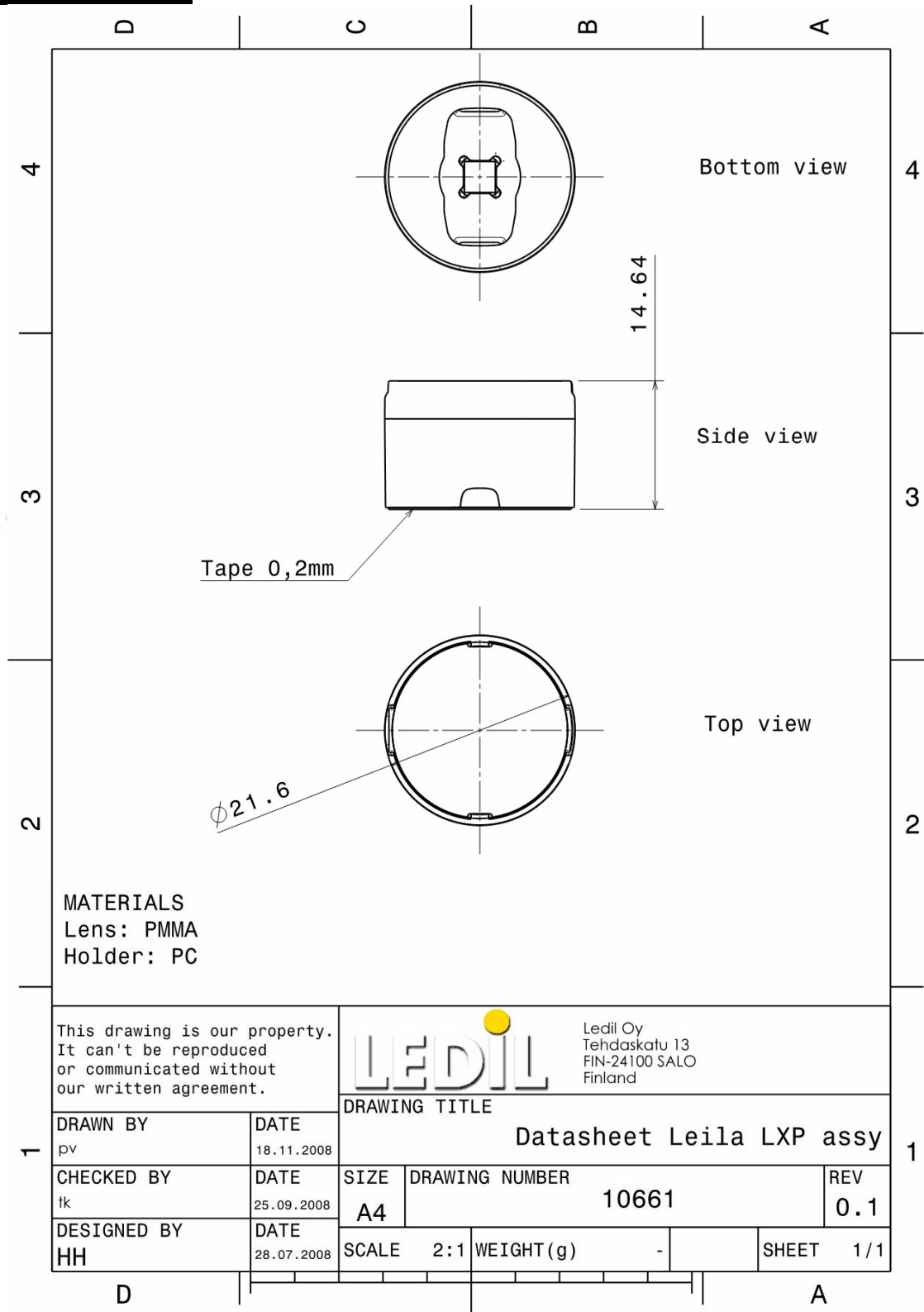
© Ledil Oy – PRELIMINARY - Subject to change without prior notice

Ledil Oy  
Tehdaskatu 13  
FIN-24100 SALO, Finland

[www.ledil.com](http://www.ledil.com)  
email: [ledil@ledil.com](mailto:ledil@ledil.com)  
FAX: +358-2-733 8001

2009-11-30

## DRAWINGS



© Ledil Oy - PRELIMINARY - Subject to change without prior notice